

Tracking and telemetry system to manage a LEV fleet in the Italian cities.

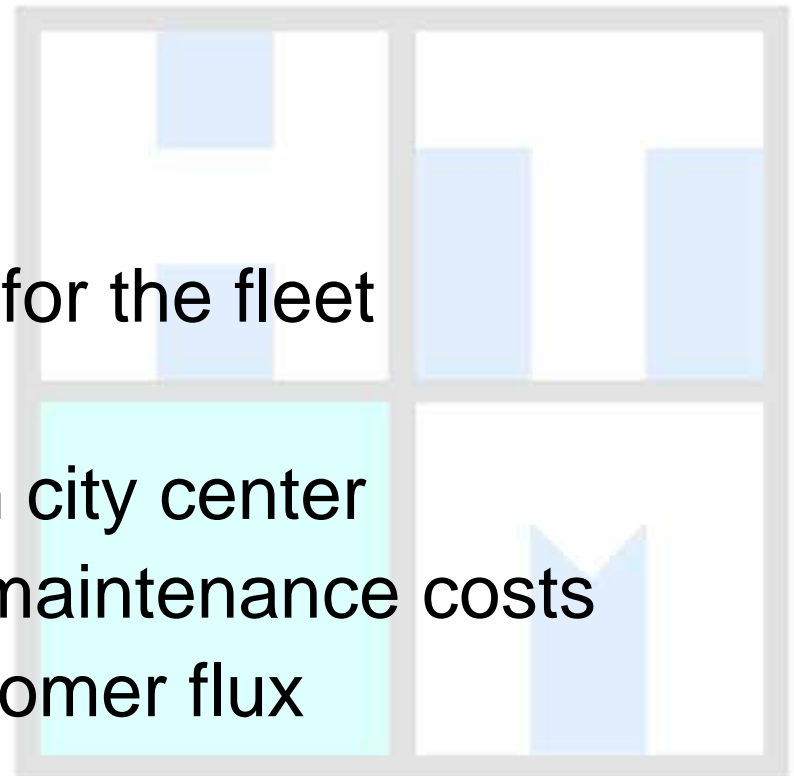
- Achieve the best productivity and minimize maintenance costs.
- HTM develops and manufactures LEV for road use and industry application.





Requirements to reach a good result in a fleet management

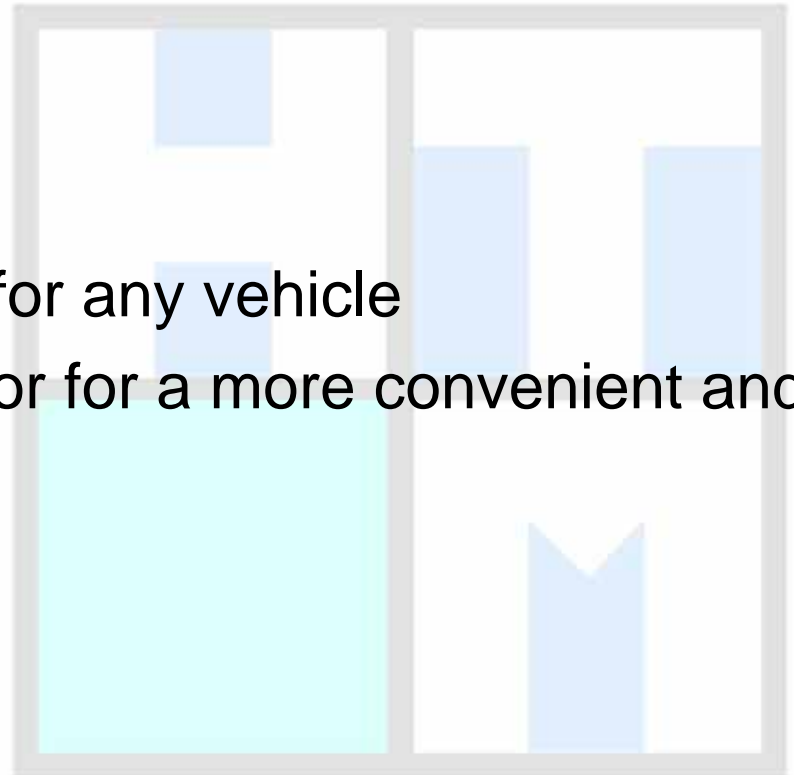
- Safety for the users and for the fleet
- One people operational
- Lower energy to move in city center
- Low investement - Low maintenance costs
- Real statistic on the customer flux
- Very good visibility

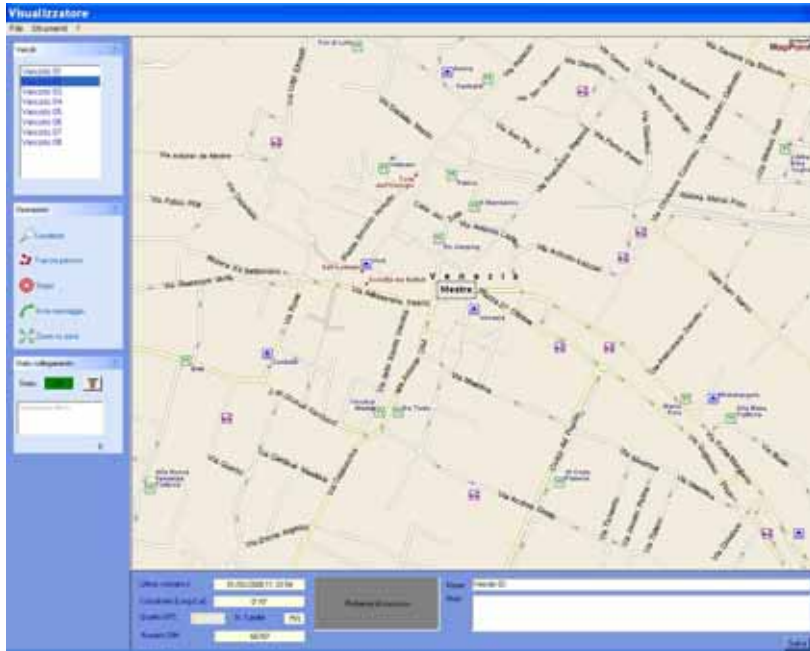




Safety for the users and for the fleet

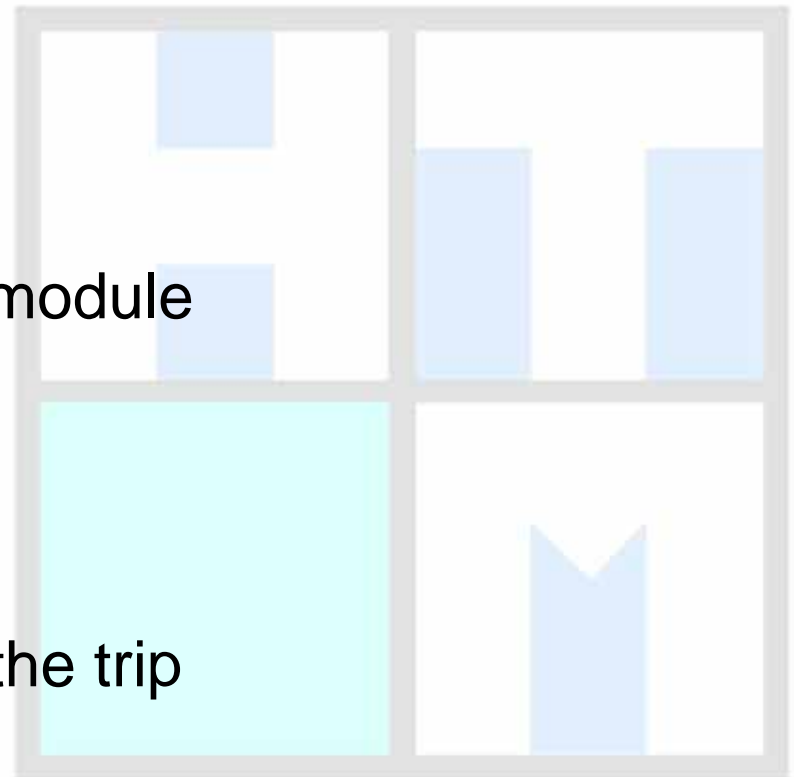
- Right dimensions and mass for any vehicle
- Suggestions from the operator for a more convenient and less dangerous course





**One people
operational**

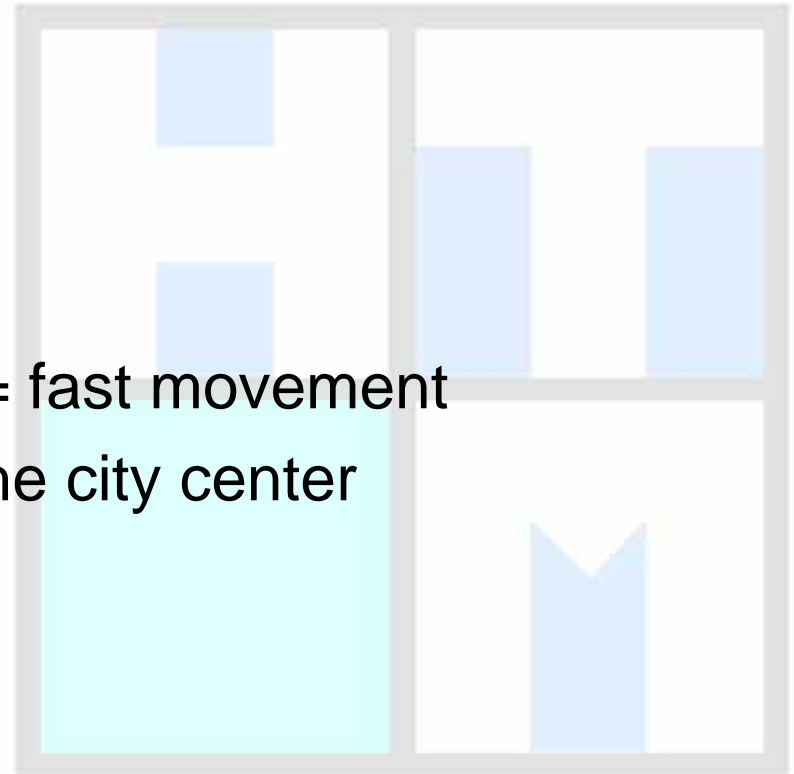
- GPS - GPRS - analog input module
- RF-ID Identification
- Booking system
- Alarm push button
- Tracking with registration of the trip
- Status display

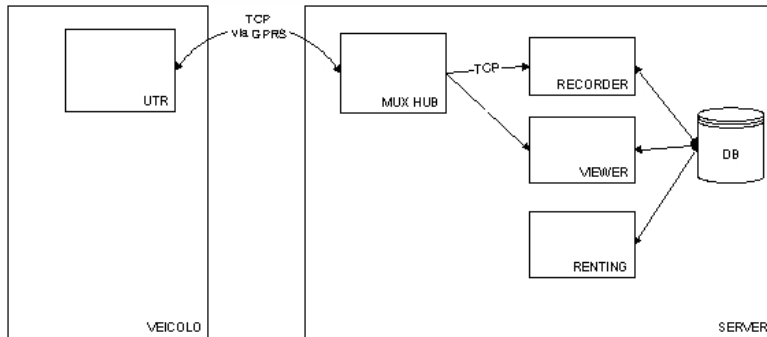




Low energy to move in city center

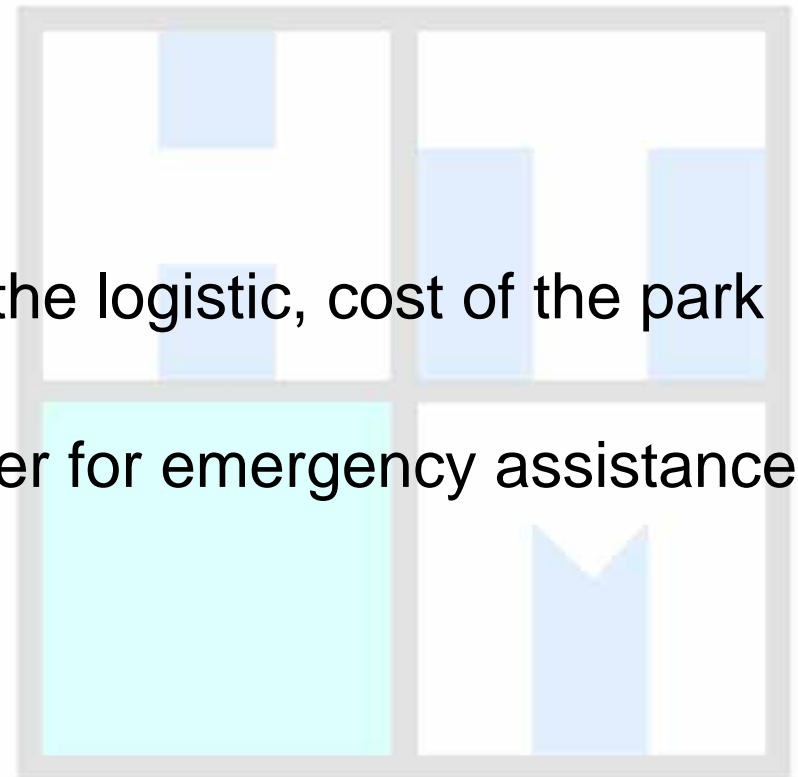
- Best Trip set up
- City center council facilities = fast movement
- Net of charging systems in the city center





Low investment- Low maintenance costs

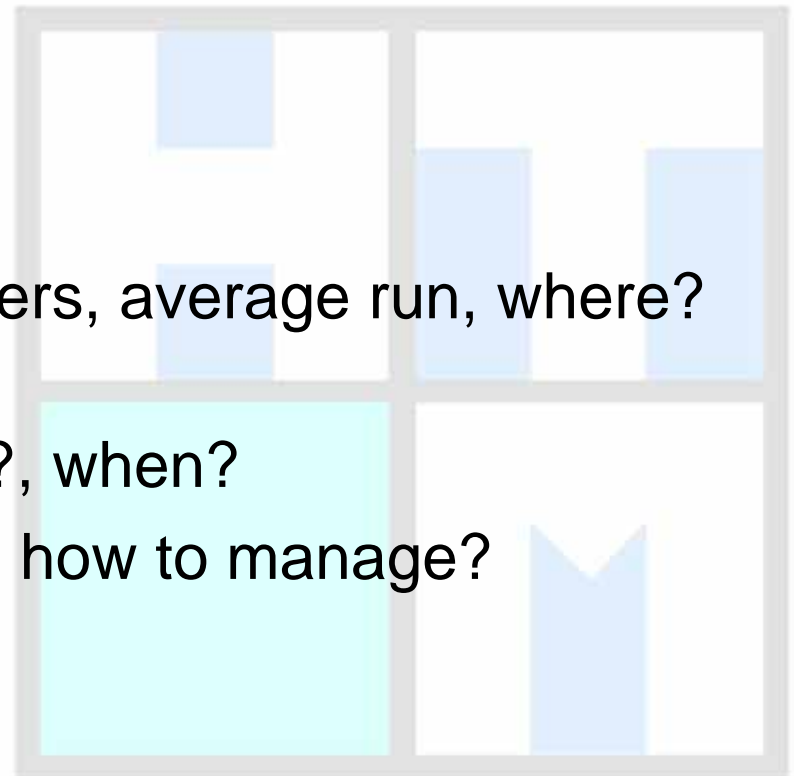
- Cost of the vehicles, cost of the logistic, cost of the park and ride management
- Just one operator with a trailer for emergency assistance
- Low cost of the spares



Real statistic on the customer flux and report on the people category



- Park and ride: 60% of the users, average run, where? When?
- Local inhabitants: 30%, why?, when?
- Monthly renting: convenience, how to manage?
- Sponsor opportunities



Very good visibility



- Rules for PM 10 overcoming.
- City center restrictions.
- New concept of city mobility.
- Results in terms of satisfaction: users, city council.

